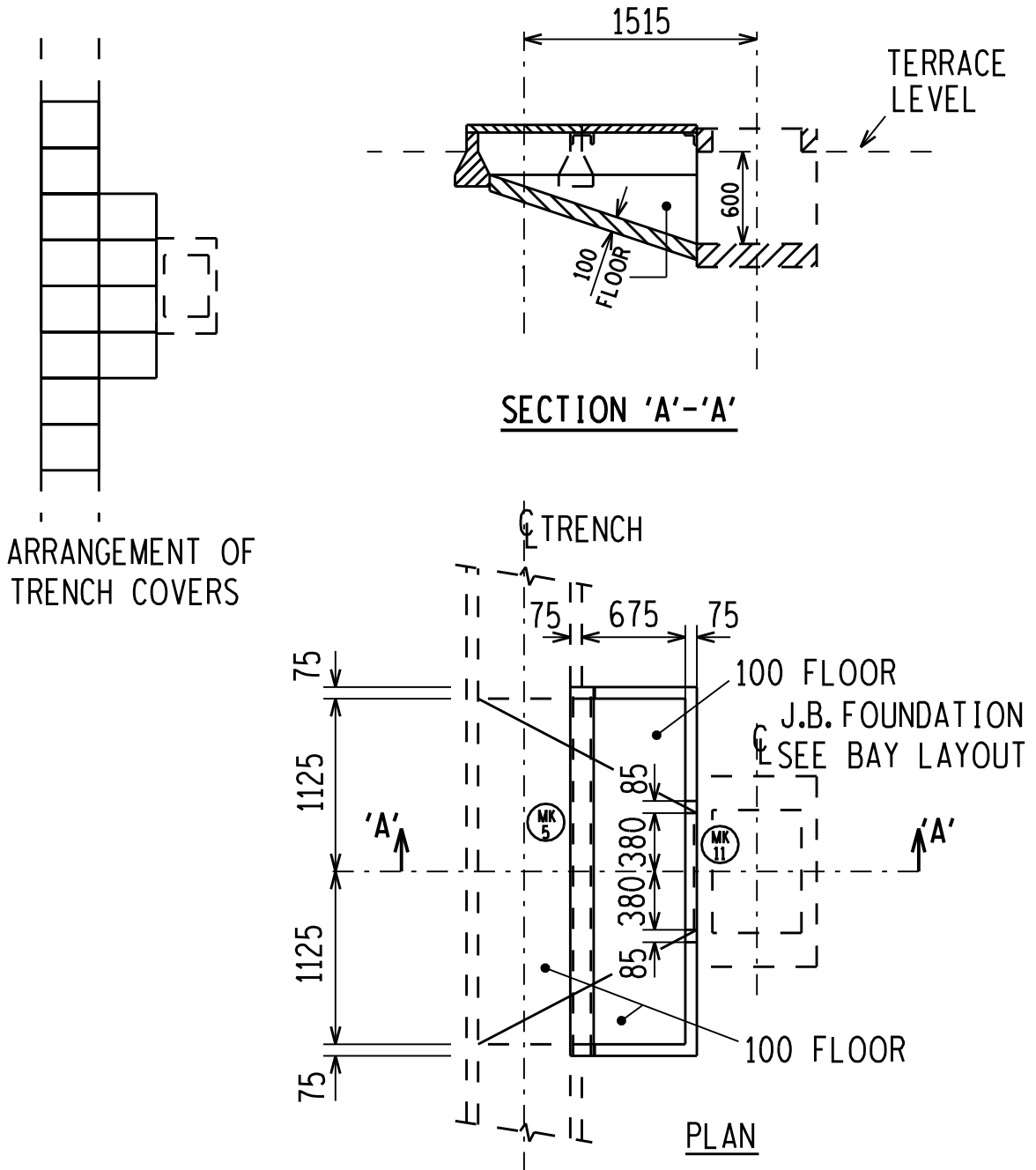


FOR TRENCH SECTIONS SEE DTL's 15 & 16
 FOR STEEL SUPPORTS SEE DTL 18
 FOR TRENCH COVERS SEE DTL 17A

DETAIL 35



THE C.A.D. REFERENCE NUMBER IS:
 1100.164100390K035.R06



DRAWN GETEKEN	Z.K.F.	23.4. 1980	CHKD NAGES	R.J.C.	AUTH MAS	REV	7	DATE DATUM	15.2. 1998
------------------	--------	---------------	---------------	--------	-------------	-----	---	---------------	---------------

H.V. YARD CIVIL WORK
 STANDARD DETAILS

0.54/390

SHEET 35

DRG.TEK
 REGISTR

390K35.DCN